



Reed Contact Magnetic Sensors Ø 10

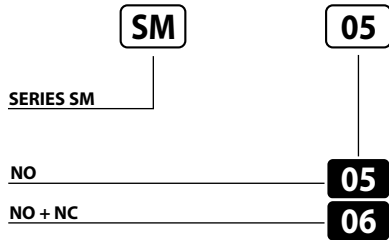
REED CONTACT MAGNETIC PROXIMITY SENSORS

- **Metal housing**
- **2 µS delay on activation**
- **2 m integral cable**
- **Choiche of magnets**

SM Series

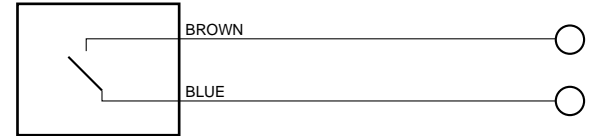


Identification code

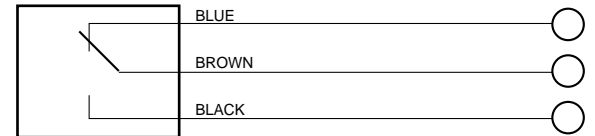


Wiring diagrams

NO CONTACT



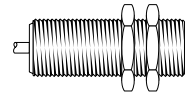
NO + NC CONTACT



MAX. VOLTAGE	230 V AC
MAX. CURRENT	0.5 A
POWER	10 W/VA
SWITCHING FREQUENCY	200 Hz
DELAY ON ACTIVATION	2 mS
REPEATABILITY	± 0.3 mm
TEMPERATURE LIMITS	-25 ÷ +70°C
PROTECTION DEGREE	IP 67
CABLE LENGTH	2m
CABLE SECTION	3 x 0.50 mm ²
HOUSING MATERIAL	Nickel-plated brass

Reed contact sensor / magnet switching distance (mm)

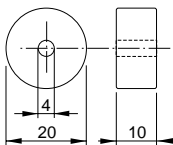
DIAMETER 10
Distance Hysteresis



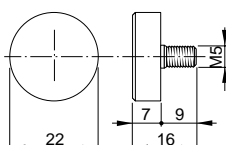
Distance	Hysteresis	Magnet
24	5	MG01
22	5	MG02
6	2,5	MG03
32	5	MG04
29	5	MG05

Magnets dimensions (mm)

MG01 (Ferrite)

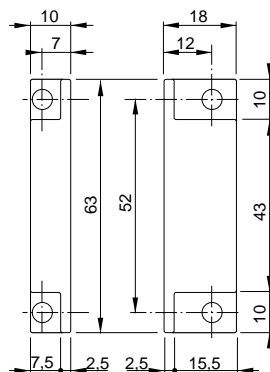


MG02 (Ferrite)



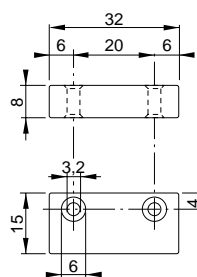
MG05

(Ferrite in plastic housing)



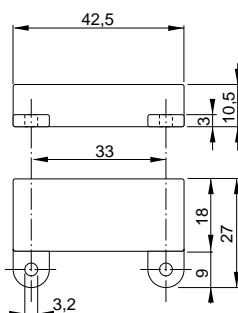
MG03

(Alnico in aluminium housing)



MG04

(Ferrite in plastic housing)



Dimensions (mm)

