

# ColorMax VIEW

## TRANSLUCENT COLOR VERIFICATION

Verify color of translucent glass, plastic containers and films with on-line, high-speed accurate and reliable measurements. The ColorMax VIEW™ combines our field-proven, patented technology with innovative hardware to provide an easy-to-use system for measuring color in a wide variety of applications. Many products require tight control of color for aesthetics, product uniformity, and often to protect from the damaging effects of light. Establishing pass/fail criteria for the color characteristics of various translucent packaging materials and providing on-line verification eliminates defects and allows real-time quality control of these processes. The ColorMax VIEW system provides a reliable solution, allowing each and every item to be verified to meet its color requirement.

The ColorMax Application Program provides a comprehensive approach to sensor set-up, color channel management and real-time sample analysis display. Low color variation of 0.5% and a 20kHz switching frequency are the best specs in the industry, providing the performance required by demanding applications. The metal alloy case and glass lens provide robust construction expected in an industrial environment.

# COLORMAX



**EMX Industries, Inc.**

4564 Johnston Parkway, Cleveland, Ohio 44128

P. 800 426 9912 F. 216 518 9884

**Sales Inquiries:** [salesupport@emxinc.com](mailto:salesupport@emxinc.com) **Technical Support:** [technical@emxinc.com](mailto:technical@emxinc.com)  
[www.emxinc.com](http://www.emxinc.com)



## Applications

- On-line, translucent packaging
- Pharmaceutical containers
- Food packaging
- Personal care products
- Glass containers
- Plastic bottles
- Translucent films

## Design & Features

- Fast response time
- Highest resolution
- PC-based configuration software
- Programmable discrete outputs
- Serial data output
- Analog outputs (RGB)
- USB / RS232 interface
- Lock out operator from changing settings
- Exclusive M30 housing
- Laser-Mark position sensor
- Adjustable bracket configuration

## Ordering Information



CM1000-R  
ColorMax VIEW receiver



CM1000-T-25  
ColorMax VIEW transmitter



LMX-300  
Laser position sensor

## Accessories



CM VIEW KIT  
Accessory Kit



CM1000B Bracket

NOT INTENDED FOR USE IN  
PERSONAL SAFETY APPLICATIONS.

## Functions

**COLOR RECOGNITION**  
**AVERAGING**  
**TEACH**  
**TOLERANCE**  
**EXTERNAL TRIGGER**  
**ILLUMINATION**  
**DISCRETE OUTPUTS**  
**RGB VALUE DISPLAY**

Up to 2 channels.  
1 to 64 readings.  
RGB values from 1 to 100%.  
0.5% to 50%  
Level, Edge, Free Run.  
0 - 100%  
High or Low (Vcc or ground).  
Bar graph - absolute value, Pie chart - relative value

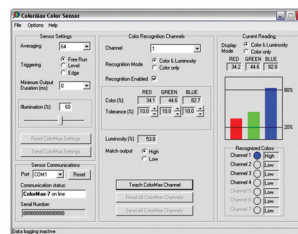
## Specifications

**Light source**  
**Detection Range**  
**Switching Frequency**  
**Receiver**  
**Discrete Outputs**  
**Communication**  
**Protection Circuitry**  
**Power**  
**External Trigger**  
**Operating Temperature**  
**Storage Temperature**  
**Mechanical Protection**  
**Housing**  
**Accessories**

White LED  
Up to 300mm  
20kHz  
RGB photodiode  
2  
RS-232C / USB  
Reverse polarity, over current (PTC thermal resettable fuse)  
12 - 30 VDC  
12 - 30 VDC  
-10° to 55°C  
-20° to 70°C  
IP67 NOT FOR PRESSURE WASH DOWN  
316 stainless steel  
Mounting bracket, jamb nuts (2), interface cable assembly,  
12 VDC power supply, Application software, I/O board  
with status indicators

**Dimensions**  
**CM 1000-R**  
**CM 1000-T**  
**LASER-MARK**

CM 1000-R 4.331" (110mm) x 1.81" (30mm)  
CM 1000-T 0.312" (8mm)dia x 3.25" (38mm)  
LASER-MARK 0.7" (16mm)dia x 3.25" (83mm)



- Exclusive PC-based configuration.
- Operator lockout prevents operators from changing the sensor settings in order to void reporting manufacturing quality issues.
- Software driven control of discrete output logic



WARRANTY EMX INC. the product described herein for a period of 2 years under normal use and service from the date of manufacture. The product will be free from defects in material and workmanship. This warranty does not cover ordinary wear and tear, abuse, misuse, overloading, altered products, or damage caused by the purchaser from incorrect connections, or lightning damage. There is no warranty of merchantability. There are no warranties expressed, implied or any affirmation of fact or representation which extend beyond the description set forth herein. EMX Inc. sole responsibility and liability, and purchaser's exclusive remedy shall be limited to the repair or replacement at EMX's option of a part or parts not so conforming to the warranty. In no event shall EMX Inc. be liable for damages of any nature, including incidental or consequential damages, including but, not limited to any damages resulting from non-conformity defect in material or workmanship.