

ColorMax VIEW

TRANSLUCENT COLOR VERIFICATION

Verify color of translucent glass, plastic containers and films with on-line, high-speed accurate and reliable measurements. The ColorMax VIEW™ combines our field-proven, patented technology with innovative hardware to provide an easy-to-use system for measuring color in a wide variety of applications. Many products require tight control of color for aesthetics, product uniformity, and often to protect from the damaging effects of light. Establishing pass/fail criteria for the color characteristics of various translucent packaging materials and providing on-line verification eliminates defects and allows real-time quality control of these processes. The ColorMax VIEW system provides a reliable solution, allowing each and every item to be verified to meet its color requirement.

The ColorMax Application Program provides a comprehensive approach to sensor set-up, color channel management and real-time sample analysis display. Low color variation of 0.5% and a 20kHz switching frequency are the best specs in the industry, providing the performance required by demanding applications. The metal alloy case and glass lens provide robust construction expected in an industrial environment.

COLORMAX



EMX Industries, Inc.

4564 Johnston Parkway, Cleveland, Ohio 44128

P. 800 426 9912 F. 216 518 9884

Sales Inquiries: salesupport@emxinc.com **Technical Support:** technical@emxinc.com
www.emxinc.com



Applications

- On-line, translucent packaging
- Pharmaceutical containers
- Food packaging
- Personal care products
- Glass containers
- Plastic bottles
- Translucent films

Design & Features

- Fast response time
- Highest resolution
- PC-based configuration software
- Programmable discrete outputs
- Serial data output
- Analog outputs (RGB)
- USB / RS232 interface
- Lock out operator from changing settings
- Exclusive M30 housing
- Laser-Mark position sensor
- Adjustable bracket configuration

Ordering Information



CM1000-R
ColorMax VIEW receiver



CM1000-T-25
ColorMax VIEW transmitter



LMX-300
Laser position sensor

Accessories



CM VIEW KIT
Accessory Kit



CM1000B Bracket

NOT INTENDED FOR USE IN
PERSONAL SAFETY APPLICATIONS.

Functions

COLOR RECOGNITION
AVERAGING
TEACH
TOLERANCE
EXTERNAL TRIGGER
ILLUMINATION
DISCRETE OUTPUTS
RGB VALUE DISPLAY

Up to 2 channels.
1 to 64 readings.
RGB values from 1 to 100%.
0.5% to 50%
Level, Edge, Free Run.
0 - 100%
High or Low (Vcc or ground).
Bar graph - absolute value, Pie chart - relative value

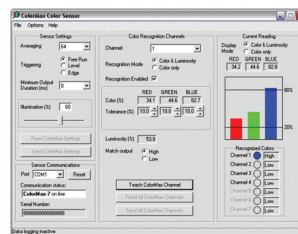
Specifications

Light source
Detection Range
Switching Frequency
Receiver
Discrete Outputs
Communication
Protection Circuitry
Power
External Trigger
Operating Temperature
Storage Temperature
Mechanical Protection
Housing
Accessories

White LED
Up to 300mm
20kHz
RGB photodiode
2
RS-232C / USB
Reverse polarity, over current (PTC thermal resettable fuse)
12 - 30 VDC
12 - 30 VDC
-10° to 55°C
-20° to 70°C
IP67 NOT FOR PRESSURE WASH DOWN
316 stainless steel
Mounting bracket, jamb nuts (2), interface cable assembly,
12 VDC power supply, Application software, I/O board
with status indicators

Dimensions
CM 1000-R
CM 1000-T
LASER-MARK

CM 1000-R 4.331" (110mm) x 1.81" (30mm)
CM 1000-T 0.312" (8mm)dia x 3.25" (38mm)
LASER-MARK 0.7" (16mm)dia x 3.25" (83mm)



- Exclusive PC-based configuration.
- Operator lockout prevents operators from changing the sensor settings in order to void reporting manufacturing quality issues.
- Software driven control of discrete output logic



WARRANTY EMX INC. the product described herein for a period of 2 years under normal use and service from the date of manufacture. The product will be free from defects in material and workmanship. This warranty does not cover ordinary wear and tear, abuse, misuse, overloading, altered products, or damage caused by the purchaser from incorrect connections, or lightning damage. There is no warranty of merchantability. There are no warranties expressed, implied or any affirmation of fact or representation which extend beyond the description set forth herein. EMX Inc. sole responsibility and liability, and purchaser's exclusive remedy shall be limited to the repair or replacement at EMX's option of a part or parts not so conforming to the warranty. In no event shall EMX Inc. be liable for damages of any nature, including incidental or consequential damages, including but, not limited to any damages resulting from non-conformity defect in material or workmanship.