

# G-Lock 1200

The EMX G-LOCK 1200 Magnetic Lock

## Applications

The G-Lock from EMX features many improvements.

- Stainless steel fully enclosed housing.
- Front or side mounting options.
- Status monitoring relay output.
- CE marked.
- 12 or 24V DC operation.
- Optional "Z" and "L" brackets for mounting.
- Anti-tamper cover caps.
- 2 year warranty.
- L = 8.67in x W = 2.52in x D = 1.7in  
(220mm x 64mm x 43mm)
- Dimensions including connector 9.5in x 2.52in x 1.7in  
(241mm x 64mm x 43mm)

# G-LOCK



### EMX Industries, Inc.

4564 Johnston Parkway, Cleveland, Ohio 44128

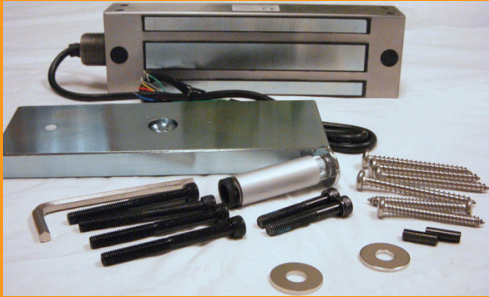
P. 800 426 9912 F. 216 518 9884

Sales Inquiries: [salesupport@emxinc.com](mailto:salesupport@emxinc.com) Technical Support: [technical@emxinc.com](mailto:technical@emxinc.com)  
[www.emxinc.com](http://www.emxinc.com)

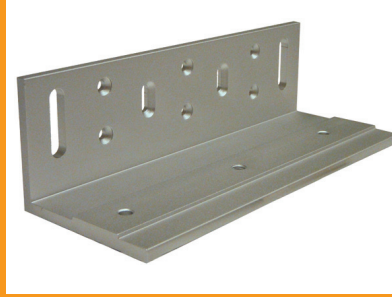
## Indicators & Controls

- Relay N/O, COM, N.C. monitor output.

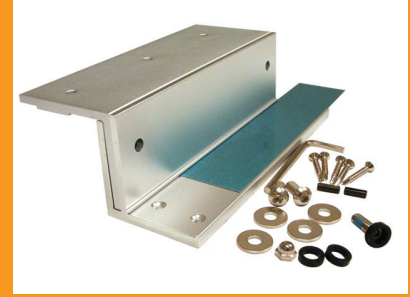
## Accessories



G-Lock 1200



L Bracket 1200



Z Bracket 1200

## Technical Data

<b>Operational Voltage</b>	12V or 24V DC (No jumper selection required)
<b>Current Consumption</b>	220 mA @ 24 VDC, 460 mA @ 12 VDC.
<b>Holding Force</b>	1200 lbs when properly installed
<b>Temperature</b>	-14°F – 158°F (-10°C - +70°C)
<b>Environmental</b>	IP67 All weather
<b>Dimensions</b>	L=8.67in x W=2.5in x D=1.7in Including connector / L=9.5in x W=2.5in x D= 1.7in (220mm x 64mm x 43mm) (241mm x 64mm x 43mm)
<b>Housing</b>	Stainless steel
<b>Weight</b>	111.0 lbs. (5 kg) net
<b>Status Relay Contacts</b>	Output 0.25A @ 60VDC max. Normally Open / Common / Normally Closed

## Ordering Information

- G-LOCK 1200 pound magnetic lock
- GL1200 BRACKET Z "Z" bracket
- GL1200 BRACKET L "L" bracket

WARRANTY EMX INC. the product described herein for a period of 2 years under normal use and service from the date of sale to our customer. The product will be free from defects in material and workmanship. This warranty does not cover ordinary wear and tear, abuse, misuse, overloading, altered products, or damage caused by the purchaser from incorrect connections, or lightning damage. There is no warranty of merchantability. There are no warranties expressed, implied or any affirmation of fact or representation which extend beyond the description set forth herein. EMX Inc. sole responsibility and liability, and purchaser's exclusive remedy shall be limited to the repair or replacement at EMX's option of a part or parts not so conforming to the warranty. In no event shall EMX Inc. be liable for damages of any nature, including incidental or consequential damages, including but, not limited to any damages resulting from non-conformity defect in material or workmanship. Rev 2.3 03/12/2012